

Behavioral Health Screener Implementation Playbook

Impacter Pathway EXPORT

Student Behavioral Health Screener

School Name: [] Guidance Counselor: [] 06/07/25

Lilliana Learner 9th Grade

16
out of 24

COMPETENT

1. Self-Insight (DEVELOPING)
May need small-group intervention. Could benefit from skill-building sessions.

2. Emotional Resilience (FOUNDATIONAL)
May need intensive, 1:1 support. Could benefit from counseling or referral.

3. Relational Awareness (COMPETENT)
Should continue practicing this skill. Would benefit from ongoing encouragement.

4. Conflict Resolution (ADVANCED)
Could use enrichment or new challenges. May benefit from peer leadership roles.

5. Effective Help-Seeking (DEVELOPING)
May need small-group intervention. Could benefit from skill-building sessions.

6. Reflective Growth (FOUNDATIONAL)
May need intensive, 1:1 support. Could benefit from counseling or referral.

Rubric Key

- FOUNDATIONAL**: Minimal or inaccurate understanding of the behavioral health skill. Rarely demonstrates the behavior; may actively resist, avoid, or withdraw from healthy practices. Lacks self-reflection and may show patterns of disengagement or oppositional behavior.
- DEVELOPING**: Some awareness of the behavioral health skill, but practice is inconsistent or surface-level. May hesitate to engage, withdraw socially, or show limited motivation. Occasional reflection on well-being, but insight and positive change are limited.
- COMPETENT**: Clear understanding of the behavioral health skill. Regularly participates and puts skills into practice. Reflects on personal well-being, demonstrates growth, and invests effort in making healthy choices. Actively engaged in supporting self and others.
- ADVANCED**: Advanced understanding and application of the behavioral health skill. Proactively leads, inspires, and supports others in building a healthy environment. Reflects deeply on well-being, adapts strategies, and drives positive change for self and community.



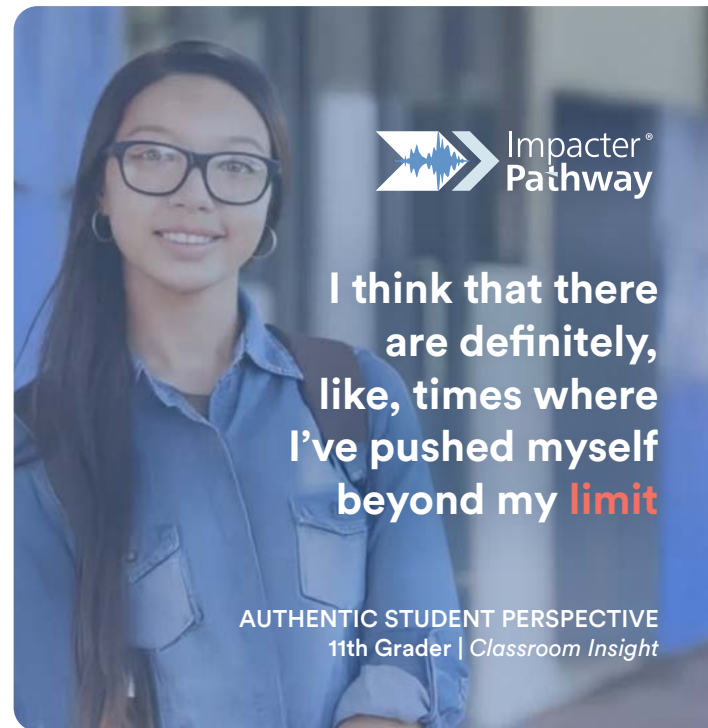
Transforming Student Wellness Through Authentic Voice

School leaders across the country are discovering what you're about to experience: when students speak in their own words about their well-being, everything changes. Traditional surveys tell us what we already know. IMPACTER's Behavioral Health Screener reveals what we've been missing.

This playbook isn't just another implementation guide—it's your roadmap to capturing authentic student voice at scale, without overwhelming your staff or disrupting your daily operations. Whether you're a counselor looking to pilot with a small group or a district leader planning universal screening, you'll find practical, tested approaches that work in real school environments.

GOAL OF THIS PLAYBOOK

Make universal (or large-scale) implementation of Impacter Pathway's Behavioral Health Screener easy, practical, and scalable across diverse school settings—without overwhelming staff. You'll find quick-start steps, a simple decision framework, and 7 ready-to-use implementation options that fit most site realities.



I think that there are definitely, like, times where I've pushed myself beyond my **limit**

AUTHENTIC STUDENT PERSPECTIVE
11th Grader | *Classroom Insight*

Reference Card: Your 30-Minute Success Blueprint

Sometimes you need to move fast. Maybe a crisis has emerged, or leadership wants to see the platform in action today. This quick-start approach gets you from decision to data in half an hour.

The beauty of this process is its simplicity.

Unlike traditional wellness surveys that require extensive training and complex logistics, IMPACTER's screener is designed for immediate deployment. Here's your step-by-step launch sequence:



LAUNCH IN 30 MINUTES

1. Pre-Check: Devices + headphones ready?

Quick scan:

Do students have access to laptops, tablets, or phones? Are headphones available? You're 90% there.

2. Facilitator Access: impacterpathway.com → Learner Login → Class Snapshot

This is your mission control. You'll see every student's progress in real-time.

3. Share student steps: Project or read aloud the login process

Students need just three pieces of info: the website, their login, and permission to be authentic.

4. Students: Login → Access Assessment → Watch video prompts → Record responses

The magic happens here. Students engage with carefully crafted prompts and share their genuine experiences.

5. Monitor: Track completion in real-time, help with device permissions or technical issues

Your role shifts from instructor to supporter. Help with tech hiccups, offer encouragement.

6. Wrap: Review submissions, note absences for make-ups

Clean finish. Flag who needs a follow-up session, celebrate completion.

Why this works:

Most behavioral health assessments require extensive setup, training, and coordination. IMPACTER's streamlined approach means you can respond to urgent needs immediately while still collecting meaningful data.

Decision Framework: Finding Your Perfect Fit

Every school is different. Rural districts face different challenges than urban centers. Elementary schedules look nothing like high school block periods. Rather than forcing a one-size-fits-all approach, use this decision tree to identify your ideal implementation path.

The key insight:
Your biggest constraint usually points to your best solution.



QUICK DECISION GUIDE

Tight schedule? → Single block ([Model 1](#))

When time is your enemy, consolidation is your friend. Get everyone done in one focused session.

Limited devices? → Mobile cart ([Model 2](#))

Turn scarcity into flexibility. A rolling cart can serve multiple classrooms throughout the day.

Need privacy? → Small-group center ([Model 3](#)) or Pull-Out Session ([Model 5](#))

Some students need quieter spaces to share authentically. Honor that need.

Need flexibility? → Multi-day window ([Model 7](#))

When rigid scheduling doesn't work, give students choice in when and where they complete their screening.

Remember:

There's no wrong choice here. The best implementation is the one that actually happens consistently in your environment.

Student Framing: Setting The Stage For Authentic Voice

How you introduce this assessment determines everything that follows. Students can sense when adults are going through the motions versus when they genuinely want to hear student perspectives.

The framing that works:

"This helps us understand how you're doing and how we can better support you. Your voice matters—speak authentically about your experiences."

Why this language succeeds:

It's honest, respectful, and positions students as partners rather than subjects. You're not evaluating them—you're learning from them.



Contents: Your Complete Implementation Toolkit

This playbook guides you through every aspect of successful implementation, from understanding the assessment's purpose to handling the logistics of a smooth assessment administration. Each section builds on the previous one, creating a comprehensive system for capturing student voice at scale.

- 1. About the Behavioral Health Screener**
Understand what makes this assessment different and why it works
- 2. Getting Started (Staff + Students)**
Master the technical basics and student onboarding
- 3. Pick Your Path**
Navigate the decision-making process with confidence
- 4. Implementation Options (7 Core Models)**
Detailed walkthroughs of proven approaches for every school context
- 5. Cadence & Scheduling Options**
Determine optimal timing and frequency for your setting
- 6. Accessibility & Language**
Supports ensure every student can participate meaningfully
- 7. Student Perspective & Framing**
Master the art of introduction and student engagement

WHAT SETS THIS PLAYBOOK APART

Every recommendation comes from real implementation experience. These aren't theoretical frameworks—they're battle-tested approaches that work in actual schools with real constraints and challenges.

You're not just implementing an assessment. You're creating a system where student voice drives better support, where data leads to action, and where every student knows their perspective matters. **Let's begin.**



1. About The Behavioral Health Screener

Beyond the Numbers: Why Student Voice Changes Everything

Here's what every educator knows but rarely talks about: traditional wellness surveys feel like compliance exercises, not conversations. Students click through Likert scales on autopilot, rating their feelings from 1 to 10 without really thinking. Meanwhile, the students who need support most—the ones struggling with anxiety, depression, or trauma—often slip through the cracks of these numerical assessments.

IMPACTER's Behavioral Health Screener changes this dynamic completely.

WHAT IT IS

A short, guided audio/video behavioral health screener with open-ended prompts. Students respond in their own words to meaningful behavioral health prompts. Authentic expression drives more meaningful insight than traditional written or Likert-scale survey tools.

Think of it this way:

Instead of asking “Rate your stress level from 1-10,” we might ask “Tell us about a time recently when you felt overwhelmed and how you handled it.” The difference in what you learn is profound.

WHY NOW: THE CASE FOR AUTHENTIC STUDENT VOICE

A short, guided audio/video behavioral health screener with open-ended prompts. Students respond in their own words to meaningful behavioral health prompts. Authentic expression drives more meaningful insight than traditional written or Likert-scale survey tools.

Traditional Assessments Fall Short:

Schools face unprecedented challenges in understanding student well-being. Traditional surveys often miss the nuance of student experiences, while behavioral indicators like attendance and grades only tell part of the story. The mental health crisis among young people demands tools that capture authentic student voice quickly and meaningfully.

Student Voice Drives Proactive Support:

Student voice through recorded reflections provides educators with deeper, more actionable insights than numerical ratings ever could. When students speak in their own words about their experiences, challenges, and strengths, schools can identify connection opportunities, support needs, and intervention points much earlier in the process. This approach transforms how schools understand and respond to student well-being, moving from reactive crisis management to proactive support systems.

Audio/Video Reveals What Numbers Cannot:

The traditional “how are you feeling on a scale of 1-10” approach fails to capture the complexity of adolescent experiences. Audio and video responses reveal tone, emotion, and context that written responses cannot convey, enabling more precise and empathetic support decisions.

When a student says “I’m fine” with a shaky voice, you hear something a survey checkbox could never capture. When they light up talking about a teacher who helped them through a tough time, you’ve identified a relationship that’s working. This is the power of authentic voice.

THE PRACTICAL REALITY: BUILT FOR YOUR SCHEDULE

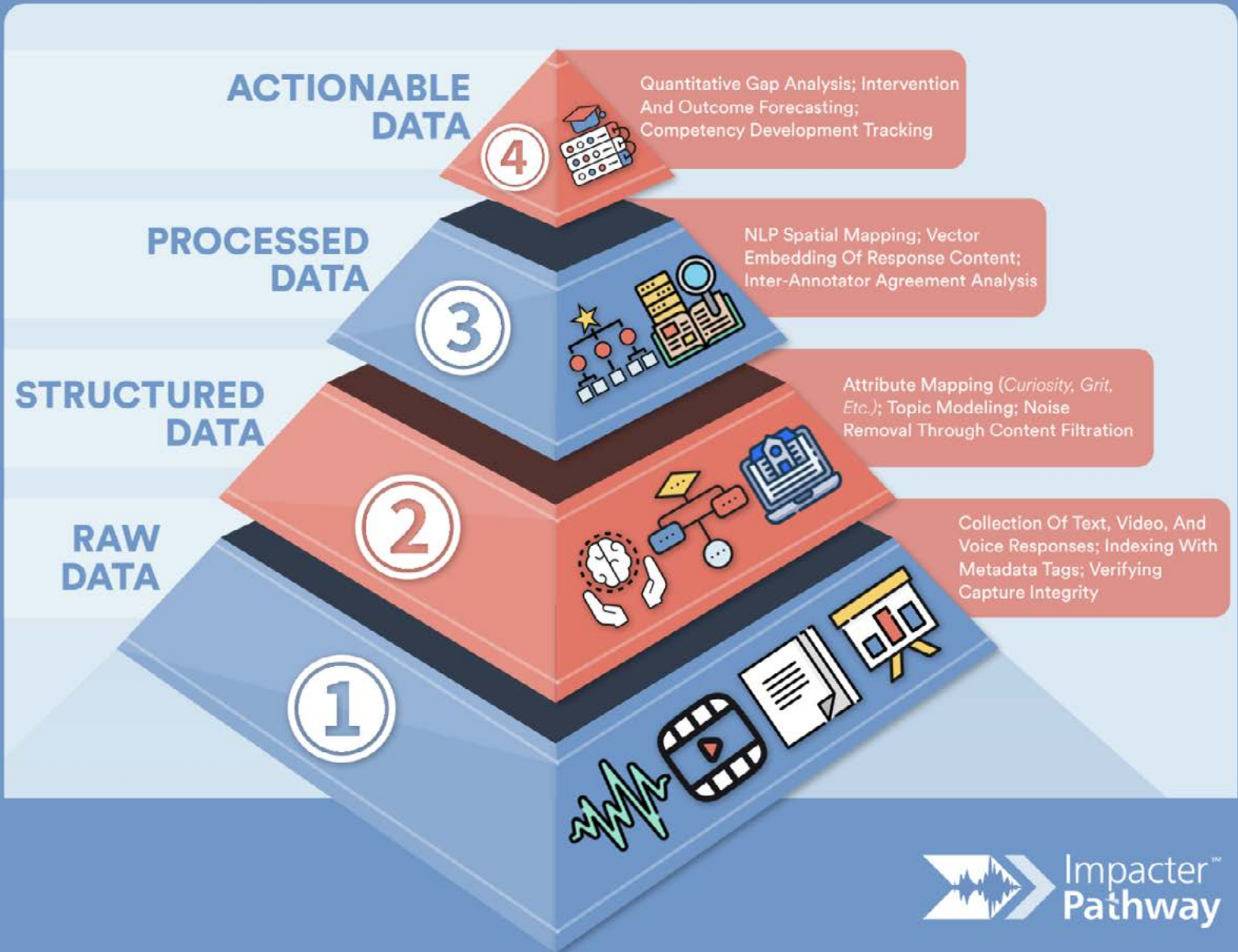
Time Required: Brief: Typically completed in ~15–20 minutes total student time (can be shorter when split across blocks).

Flexible Where & How: Schools choose what fits local schedules, staffing, and device access. Runs in classrooms, mobile pop-ups, small-group testing centers, outdoor pods, or at home.

Powerful Analytics:

Reflections can be analyzed using Impacter Pathway’s machine learning algorithms to generate deeper, faster insights at scale. These analytics produce individual reports and actionable data, helping staff and administrators save time while quickly identifying Tier 2 and 3 responses from students who may need additional support.

The beauty of this approach is that it respects both student authenticity and educator time constraints. You get richer data in less time, with technology handling the heavy lifting of analysis so you can focus on what matters most: supporting students.



2. Getting Started: From Setup To Success In Minutes

Implementing Without Overwhelm

Let's be honest: you're already managing a dozen initiatives, three crises, and a stack of paperwork that never seems to shrink. The last thing you need is another complex system that requires extensive training and coordination.

IMPACTER's screener was designed by educators who understand this reality.

Staff members can use the following to launch the screener in under 10 minutes—no joke.



2.1 PRE-LAUNCH CHECKLIST: YOUR SUCCESS FOUNDATION

Before you dive in, a quick inventory ensures smooth sailing. Don't worry—the requirements are simpler than you might expect.

✓ **Devices:**

Each student needs access to a device with functioning camera & microphone (laptop, Chromebook, tablet) plus headphones for privacy/noise control.

***Reality check:** This covers 90% of school environments today. Even bring-your-own-device policies work perfectly.*

✓ **Space:**

Decide whether you'll run in a full class block, rotate a mobile cart through rooms, schedule a small-group center, or allow self-paced completion. Diverse setup models are supported across the Implementation Handbook.

***The key insight:** Work with your existing infrastructure, don't fight it.*

✓ **Assessment Window:**

Will students finish in one sitting or over multiple short assessment blocks? A flexible submission window (e.g., multi-day) is supported when schools need more time.

Choose what matches your reality—perfection isn't required, consistency is.

2.2 STAFF ACCESS: YOUR MISSION CONTROL CENTER

Use these steps when facilitating a class, group, or make-up session. This becomes second nature after your first implementation.

1. Go to impacterpathway.com and click “Learner Login.”
2. Sign in with your district credentials (SSO or provided login).
3. Open Class Snapshot to view your roster and track completion in real time.
4. Select the class or group you’re screening, and choose Behavioral Health Screener* to monitor completion.
5. Confirm devices/headphones are ready. Read or display the Student Steps below.

*Note: IMPACTER supports multiple assessment types in a unified dashboard, so you may see other assessment options—be sure to select the Behavioral Health Screener for this block.

What makes this work:

Real-time visibility means you can help students who get stuck, celebrate those who finish, and track who needs follow-up—all from one screen.



2.3 STUDENT STEPS: CLEAR PATH TO AUTHENTIC VOICE

Students need clarity and confidence to share authentically. Project these steps or read them aloud—either approach works perfectly.

1. Go to impacterpathway.com and click “Learner Login.” Sign in with your school credentials.
2. Click “Access Assessment”
3. Find the Behavioral Health Screener and click to start.
4. You’ll see a short video host introduce each prompt.
5. (Optional) Use the Notes box to plan what you want to say before recording.
6. Select Audio or Video response. IMPACTER assessments are built for spoken expression—your voice matters!
7. Enable your camera & microphone when prompted so you can record. (If you previously denied permissions, use the lock icon in your browser bar to re-enable.) IMPACTER’s design depends on recording short spoken responses.
8. Record your response. Not happy? You can re-record before submitting.
9. Complete all prompts now or pause and return later (if your school set a multi-day window). Flexible windows are supported.
10. Click Submit. You’re done!

Why this process succeeds:

Students control their own experience. They can plan, practice, and perfect their responses. The technology supports their voice rather than constraining it.

Your role during implementation:

You’re not a test proctor—you’re a supportive presence. Help with technical hiccups, offer encouragement, and remind students that their authentic voice is exactly what you want to hear.

3. Pick Your Path: Strategic Decision-Making Made Simple

Finding Your Implementation Sweet Spot

Here's the truth about implementation planning: the perfect approach is the one that works consistently in your actual environment, not the one that looks best on paper. Every school has unique constraints—tight schedules, limited devices, diverse student needs, staffing realities. Rather than forcing a one-size-fits-all solution, this section helps you navigate those constraints strategically.

The goal isn't perfection—it's sustainability. Use this one-page planning guide before rollout. Clarify three core decisions—Scheduling Window, Setting, and Screener Administrator—then match to one of the 7 Implementation Options that actually work in your context.

3.1 Decision Table: Your Strategic Framework

Think of this as your implementation GPS. Instead of wandering through options randomly, these decision points guide you toward approaches that fit your reality.

| Decision | Options | When to Choose | Linked Scenarios |
|--------------------------------|--|--|------------------|
| Scheduling Window | Single class block; several short assessment blocks; multi-day student-guided window | Tight schedules? single block. Limited devices? stagger blocks. High absence rates? multi-day window. | 4.1, 4.2, 4.7 |
| Setting | Classroom; Mobile Cart (indoor/outdoor); Small-Group Center; Push-In; Pull-Out; Home; Student Choice | Match privacy, staffing, devices, and grade level needs. | All |
| Screener Administrator | Teacher; Support Staff; Case Carrier; Family; Student Self (with staff monitoring completion) | Use existing staff rhythms; small-group or IEP cases may need specialist facilitation. | All |
| Privacy & Noise | Headphones; privacy folders; spaced pods; outdoor distance | Increase supports when prompts are more personal or when recording in shared spaces. | 4.2, 4.3, 4.5 |
| Make-Ups & Absences | Add rolling make-up block; open remote access; student-guided window | Use when attendance fluctuates or students miss the initial session. | 4.3, 4.6, 4.7 |

How To Use This Framework:

Start with your biggest constraint. Is it time? Devices? Privacy needs? That constraint often points you toward your best solution. Schools that try to fight their constraints usually struggle with implementation. Schools that work with their constraints find sustainable success.

4. Implementation Options: Proven Approaches For Every Context

Real Solutions For Real Schools

These aren't theoretical models—they're battle-tested approaches that work in actual schools with real students, limited budgets, and busy staff. Each option addresses specific challenges while maintaining the core goal:

Capturing Authentic Student Voice Efficiently And Respectfully.

Model 1 Class Period Block (Homeroom / Advisory / SEL Period)

The Classroom Champion Approach

This is implementation at its most straightforward. When you have all students in one familiar space with devices ready to go, you can achieve universal screening efficiently while maintaining the supportive atmosphere students need for authentic sharing.

Appropriate For

 6-8

 9-12

Perfect For When You Have:

Established advisory or homeroom periods, consistent daily schedules, reliable 1:1 device access, and students who are comfortable with technology.

You'll Need:

- 1:1 devices
- Headphone
- Projector or board for intro steps.

Time:

20-30 min (or 3 x ~10-min blocks).

Good For:

Fast, universal coverage during a class period all students attend (homeroom, advisory, SEL). Minimal schedule disruption. Schools with consistent daily homeroom/advisory; fast universal coverage; minimal schedule disruption.

The Implementation Flow:

- 1. Launch Class Snapshot; confirm roster.**
Start with confidence. Check that all expected students are present and accounted for.
- 2. Project student steps; distribute headphones.**
Clear communication prevents confusion. Make sure every student knows exactly what to do.
- 3. Students complete screener simultaneously; absent students flagged in Class Snapshot.**
The magic happens here. Students settle into their own authentic sharing while you monitor progress.
- 4. Close block; review completion.**
Clean wrap-up. Note who needs follow-up and celebrate successful completion.

Implementation Tips That Actually Work:

Play light ambient noise (lo-fi music, white noise) so students don't feel everyone can hear them. Encourage headphones even if the room is quiet. Have students practice speaking at a level that allows the microphone to capture their voice clearly without interfering with others' recordings.

Why This Approach Succeeds:

Students are in their familiar classroom environment with their regular teacher or advisor—the person who knows them best. The routine feels normal, not like a special “assessment day” that might create anxiety.

When This Works Best:

Schools with strong advisory cultures, consistent schedules, and students who are comfortable with simultaneous independent work.



Model 2 Mobile Assessment Cart (Indoor / Outdoor Pop-Up)


The Flexibility Champion Approach

Turn your biggest constraint—limited classroom devices—into your greatest asset: ultimate flexibility. A mobile cart transforms any space into a screening center, letting you bring the assessment to students rather than disrupting entire class schedules.

Appropriate For

 K-5

 6-8

 9-12

Perfect For When You Have:

Limited classroom technology, a counselor or support staff member who can move between locations, varied classroom schedules that make universal blocks difficult, or a need for creative space solutions.

You'll Need:

- Rolling cart w/ charged devices
- Headphone bundle
- Privacy folders or trifold shields
- Extension cord / power strip
- Optional portable Wi-Fi hotspot
- Outdoor shade (pop-up tent/umbrella) if outside.

Time:

Flexible—schedule assessment blocks by class or grade.

Good For:

Limited device classrooms; rotating staff (counselor covering multiple schools); quick setup in any available space—classroom corner, cafeteria side room, hallway alcove, shaded outdoor tables.

The Implementation Flow:

- 1. Reserve time slots; roll cart to location.**
Coordination is key. Work with teachers to identify optimal times that don't disrupt instruction.
- 2. Set up 4-10 mini stations (device + headphones + privacy folder) with ~3-4 ft spacing (more if noise).**
Create a professional, comfortable environment anywhere you land.
- 3. Cycle small groups through assessment while the rest of the class works independently.**
Seamless integration with existing instruction. No class period lost.
- 4. Sync completions in Class Snapshot; recharge devices before moving to next site.**
Maintain momentum. Keep the cart ready for the next location.

Outdoor Implementation Notes:

Choose shade, stable surfaces, and wind-safe privacy folders; test Wi-Fi signal; provide lap boards if no tables.

Why This Approach Succeeds:

You're working with existing constraints rather than fighting them. Teachers love that instruction continues while screening happens. Students appreciate the smaller, more intimate setting.

The Outdoor Advantage:

Fresh air, natural spacing, and a change of scenery can actually improve student comfort and authenticity. Some of the most genuine responses come from students who appreciate being outside the traditional classroom walls.

When This Works Best:

Schools with device limitations, flexible staff who can facilitate, and creative approaches to space usage. Elementary schools particularly love this model because it feels less formal and more approachable for younger students.

Model 3 Small-Group Testing Center (Wellness Center / Library / Lab)

The Structured Sanctuary Approach

When you need calm, controlled environments for authentic sharing, dedicated testing centers provide the perfect solution. This approach transforms quiet spaces like libraries, wellness centers, or computer labs into screening sanctuaries where students can focus without classroom distractions.

Appropriate For

 K-5

 6-8

 9-12

Perfect For When You Have:

Dedicated quiet spaces, support staff who can facilitate multiple sessions, students who need calmer environments for authentic sharing, or complex scheduling that requires structured coordination.

You'll Need:

- Quiet room w/ spaced recording pods
- Headphones
- Check-in sheet

Time:

20-30 min per session typical.

Good For:

Structured scheduling; make-ups; students in need of a calmer environment; multi-grade screening days, implementations requiring non-teacher staff support.

When This Works Best:

Schools with available quiet spaces, support staff who can facilitate multiple sessions, and students who struggle with classroom distractions during reflection activities.

The Implementation Flow:

- 1. Build schedule by periods/grade/subject; print roster.**
Organization is everything here. Clear scheduling prevents confusion and ensures smooth transitions.
- 2. Escort groups of 10-20; seat with spacing.**
Create a professional testing environment that feels supportive, not intimidating.
- 3. Project student steps; distribute headphones.**
Clear communication in the calm environment helps students focus on authentic sharing.
- 4. Confirm submissions; dismiss and reset stations.**
Clean transitions between groups maintain the professional atmosphere.

Implementation Tips:

Plan student flow to avoid bottlenecks between groups. Provide low white-noise track to mask speech.

Why This Approach Succeeds:

Some students need quieter, more structured environments to share authentically. The dedicated space signals that their voice matters enough to create special conditions for hearing it.





Model 4 Push-In Classroom Mini-Stations (Support / IEP-Friendly)


The Seamless Support Approach

This model brings specialized support directly into the classroom, creating small recording stations that operate alongside regular instruction. It's perfect for students who need additional support while maintaining the comfort of their familiar classroom environment.

Appropriate For

 K-5

 6-8

 9-12

Perfect For When You Have:

Support staff who can circulate between classrooms, students with IEPs or 504 plans who need accommodations, mixed-support classrooms where some students need extra assistance.

You'll Need:

- 4-6 devices + headphones
- Small privacy station in back/side of room
- Schedule for student rotation

Time:

Rotating mini-groups during a longer class block (20–40 min total).

Good For:

Targeted cohorts; mixed-support classrooms; when a case carrier, counselor, or other support provider can circulate.

The Implementation Flow:

1. Support staff arrives w/ devices & headphones.

Coordination with classroom teacher ensures smooth integration with ongoing instruction.

2. Identify first group of 4-6 students to record at stations; others continue classroom instruction.

Seamless blend of screening and learning. No instructional time lost.

3. Rotate groups until all complete.

Systematic approach ensures every student gets the support they need.

4. Mark completions in Class Snapshot.

Real-time tracking keeps everyone on the same page.

Implementation Tips:

Maintain natural ambient noise; fully silent rooms can make students self-conscious while recording.

Why This Approach Succeeds:

Students get specialized support without being pulled out of their familiar environment. Teachers appreciate that instruction continues while screening happens with expert facilitation.

When This Works Best:

Schools with strong support staff networks, students who need accommodations but prefer staying in their classroom, and teachers who value instructional continuity.

Model 5 Pull-Out Targeted Sessions (Case Carrier / Support Team)


The Personalized Care Approach

For students who need individualized attention, accommodations, or simply perform better in very small groups, pull-out sessions provide the ultimate in personalized support. This approach ensures that every student can participate meaningfully, regardless of their specific needs.

Appropriate For

 K-5

 6-8

 9-12

Perfect For When You Have:

Students with IEP/504 accommodations, English learners who need translation support, students with anxiety around technology or recording, or those who simply work better in very small groups.

You'll Need:

- Small resource or conference room
- 1-5 devices
- Headphones
- Call slips and/or schedule list.

Time: ~15-20 min per student; batch small groups when appropriate.

Good For:

Students with IEP/504 accommodations; those needing read-aloud, translation, or adult proximity; make-up or follow-up screenings.

The Implementation Flow:

- 1. Case Carrier sends call slips / messages.**
Clear communication ensures students know when and where to report.
- 2. Greet students; review student steps; assist with permissions if needed**
Personal attention helps students feel comfortable and supported.
- 3. Document accommodations provided (e.g., prompt read aloud).**
Proper documentation ensures compliance and continuity of care.

Implementation Tips:

Build transition buffer; plan quick tech checks to keep sessions running. Student flow considerations apply.

Why This Approach Succeeds:

Some students need individual attention to share authentically. The personal care and accommodation support ensures that every voice is heard, regardless of learning differences or language barriers.

When This Works Best:

Schools with strong special education or ELL support teams, students who require accommodations for authentic participation, and situations where individual attention dramatically improves response quality.






Model 6 Family-Assisted Remote


The Home Connection Approach

Sometimes the most authentic sharing happens in the comfort of home, especially for younger students or those who feel anxious in school settings. This approach extends your screening reach while building family engagement in student wellness.

Appropriate For

 K-5 (w/ adult help)

 6-8

 9-12

Perfect For When You Have:

Students absent on screening day, hospital/homebound learners, families who want to support their child's participation, or students who are more comfortable sharing from home.

You'll Need:

- Student login credentials
- Due date
- Tech help contact

Time:

Flexible submission window (set by school)

Good For:

Students absent on screening day; hospital/homebound learners; families who want to preview prompts with younger students.

The Implementation Flow:

1. Send flyer (Appendix A) w/ login URL, steps, and due date.

Clear communication helps families support their child's participation.

2. Family supports device setup & permissions

Parent partnership ensures technical success and emotional support.

3. Student records responses; system logs completion.

Technology tracks completion while family provides encouragement.

Implementation Tips:

Confirm device + internet access; encourage use of headphones or a quiet room at home; remind families that re-record is allowed.

Why This Approach Succeeds:

Home environments can feel safer for authentic sharing, especially for younger students or those with anxiety. Family support can boost participation and response quality.

When This Works Best:

Schools with strong family engagement, students who are absent during school-based screening, or situations where home environments support better authentic sharing.

Model 7 Student-Guided Window (Self-Paced Completion)

The Empowerment Approach

For mature students who can manage their own completion timeline, this approach provides ultimate flexibility while maintaining accountability. Students choose when, where, and how they complete their screening within a defined window.

Appropriate For

📖 6-8

🎓 9-12

Perfect For When You Have:

Large secondary campuses with complex schedules, students who prefer self-directed completion, need to combine on-campus and remote completion options, or high absence rates that make universal sessions difficult.

You'll Need:

- ✓ Open access period in platform
- ✓ Reminder system
- ✓ Completion tracker in Class Snapshot.

Time:

Multi-day (e.g., 1–2 weeks).

Good For:

Large secondary campuses; flexible schedules; combining on-campus and remote completion; late make-ups.

The Implementation Flow:

- 1. Review student steps & announce deadline.**
Clear expectations and timeline provide structure within flexibility.
- 2. Provide list of acceptable spaces (library pod, counselor office, outdoor shaded bench, home)**
Options honor different student preferences and circumstances.
- 3. Send automated or manual reminders mid-window.**
Gentle nudges maintain momentum without pressure.
- 4. Use Class Snapshot to nudge non-completers; close window at deadline.**
Accountability ensures participation while respecting student choice.

Implementation Tips:

Offer drop-in support hours for students who need tech help or quiet space.

Why This Approach Works:

Student choice and ownership often lead to more thoughtful, authentic responses. The flexibility accommodates complex secondary schedules and diverse student needs.

When This Works Best:

Schools with mature student populations, complex scheduling that makes universal sessions difficult, and students who respond well to self-directed responsibilities.



5. Cadence & Scheduling Options: Finding Your Rhythm

Strategic Timing For Maximum Impact

“How often should students complete IMPACTER Pathway assessments to yield the most actionable data?”

This question drives most implementation planning, and the answer depends entirely on your goals, capacity, and student needs. The key insight: more frequent isn't always better. Strategic timing that allows for meaningful action between screenings creates the most value.

Recommended Menu (choose what fits your system):

Annual Baseline:

Once each year (e.g., fall) to capture schoolwide climate & needs.

Perfect for: Schools just starting with behavioral health screening, limited capacity for follow-up actions, or those wanting to establish baseline data before expanding.

Biannual (Fall + Spring):

Allows growth comparison across the year; popular starting point.

Perfect for: Schools ready to track progress over time, those with established support systems for acting on data, and situations where you want to measure intervention effectiveness.

Quarterly Targeted Groups:

Universal in fall; targeted re-screens for identified groups each quarter.

Perfect for: Schools with sophisticated support systems, those serving high-needs populations, and situations where you want to monitor specific student groups closely.

Event-Triggered:

Pull-out or student-guided re-screen after major school events, crises, or changes.

Perfect for: Schools that want to monitor student response to significant events, those dealing with ongoing challenges, and situations where timing matters more than schedule.

Implementation Reality Check:

Use shorter assessment blocks if you're spreading completion over multiple days; student-guided windows support flexible scheduling.

The Key To Success:

Choose a frequency you can sustain with high-quality follow-up actions. Better to screen less frequently with meaningful response than to screen constantly without adequate support for students who need help.



6. Accessibility & Language Supports: Every Voice Matters

Breaking Down Barriers To Authentic Participation

The most powerful insights often come from students who struggle to participate in traditional assessments. Rather than accepting that some students “just don’t do well with technology” or “aren’t comfortable speaking,” IMPACTER’s design includes built-in flexibility that transforms barriers into bridges to authentic voice.

The Fundamental Principle:

Every student has something important to say. Our job is creating conditions where they can say it.

LOW-LIFT MOVES THAT EXPAND ACCESS

These aren’t complex accommodations requiring extensive training—they’re simple adjustments that dramatically improve participation without slowing implementation.

Younger Grades (K-5):

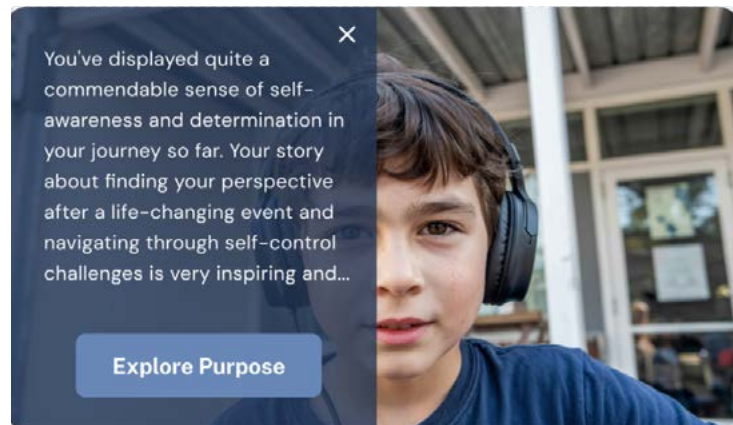
Shorter blocks (3×10 min); preview what recording looks/sounds like; consider adult read-aloud of prompts.

Why This Works: *Younger students need modeling and familiarity. Breaking into shorter chunks prevents overwhelm while maintaining authentic engagement.*

Planning & Expression Supports:

Encourage use of Notes box; allow re-record; provide prompt sentence starters if needed.

Why This Works: *Some students think better with planning time. The Notes box becomes a scaffold for authentic expression rather than a barrier to spontaneous sharing.*



Multilingual Learners:

Offer translated prompt summaries in slide or hand-out; allow student to respond in preferred language if a bilingual reviewer is available (or mark for translation follow-up).

Why This Works: *Authentic voice emerges in the language where students feel most comfortable expressing complex emotions and experiences.*

Audio Clarity:

Headphones strongly recommended.

Why This Works: *Clear audio input leads to better transcription and analysis. Students also feel more private and confident when they can hear themselves clearly.*

Quiet vs Comfort:

Fully silent rooms can make students self-conscious—light ambient noise (fan, soft music) can help.

Why This Works: *Complete silence can feel intimidating. Natural background sounds create psychological comfort for authentic sharing.*

Assistive Tech:

Switch to audio-only if video causes bandwidth issues; external mic for students with speech devices.

Why This Works: *Technology should support voice, not constrain it. Flexibility ensures every student can participate meaningfully.*

7. Student Perspective & Framing: The Art Of Invitation

Creating Psychological Safety For Authentic Voice

How you introduce this assessment determines everything that follows. Students can immediately sense whether adults are genuinely interested in their perspectives or just completing another requirement. The language you use, the tone you set, and the expectations you communicate shape the entire experience.

HOW TO FRAME THIS FOR STUDENTS

The Purpose:

“We want to hear from you about how you’re doing and how we can better support you. Your voice matters, and sharing your experiences helps us understand your unique perspective.”

Why this works: It positions students as experts on their own experience and frames the assessment as partnership, not evaluation.

The Process:

“You’ll respond to a few prompts by recording short audio or video responses. Think of it like having a conversation with someone who really wants to understand your experience.”

Why this works: Conversational framing reduces anxiety and emphasizes authentic sharing over “correct” responses.

The Authenticity:

“There are no right or wrong answers. We want to hear your authentic thoughts and feelings. You can take notes first if that helps, and you can re-record if you want to.”

Why this works: Explicitly removing judgment creates psychological safety. Emphasizing choice and control builds student confidence.



WHAT STUDENTS SHOULD KNOW

Privacy: Your responses are private and used to help support you and improve the school experience.

Flexibility: You can choose audio or video, and you can re-record if you’re not happy with your initial response.

Time: This takes about 15-20 minutes total and can be broken into shorter chunks if needed.

Support: If you need help with technology or have questions, ask your teacher or facilitator.

SUPPORTING HESITANT STUDENTS

Every implementation includes students who feel uncertain about recording themselves. Rather than pushing through resistance, acknowledge concerns and provide genuine support.

“I don’t want to record myself”: Remind students they can choose audio-only and that their voice provides much richer information than written responses.

The key: Validate the feeling while offering alternatives. Never dismiss student concerns about recording.

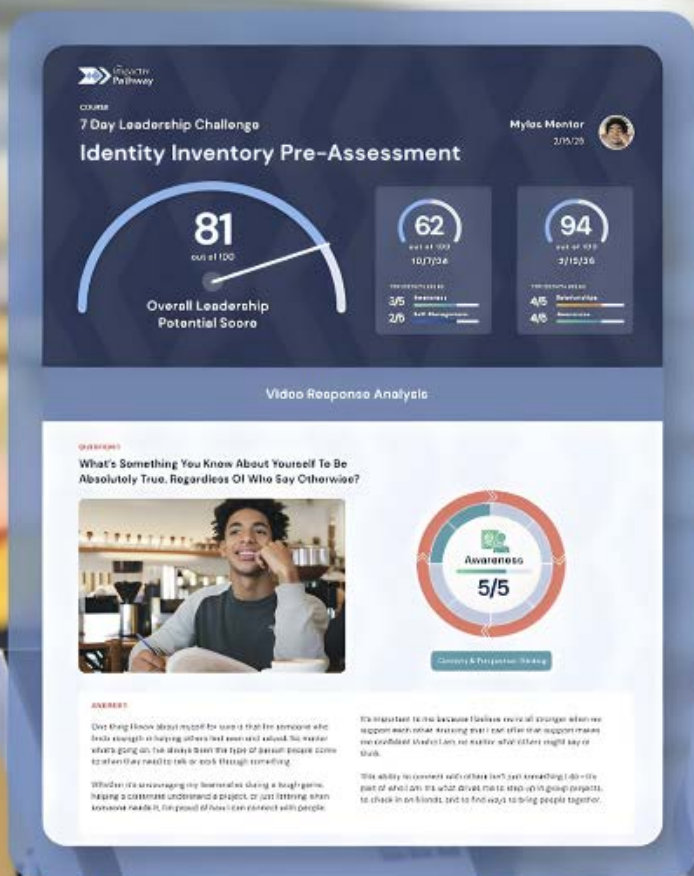
“I don’t know what to say”: Encourage use of the Notes box to plan thoughts, and remind them there are no wrong answers.

The key: Normalize uncertainty and provide scaffolding. Many students think they need perfect responses when authentic voice is actually what matters.

“This feels awkward”: Normalize the feeling and remind students that their authentic voice helps create positive changes in their school experience.

The key: Acknowledge that recording can feel strange while connecting to larger purpose. Students need to know their discomfort serves a meaningful goal.

The implementation reality: Most student resistance dissolves once they start engaging with the prompts. The design itself builds confidence as students realize they do have valuable perspectives to share.



Conclusion: From Implementation To Impact

You're Ready To Transform Student Voice

You've reached the end of this playbook with everything you need to capture authentic student voice at scale. But let's be clear about what you're really doing here: you're not just implementing another assessment. You're fundamentally changing how your school listens to students.

THE REALITY CHECK:

Every approach in this playbook has been tested in real schools with real constraints. The mobile cart approach emerged from a rural district with limited devices. The small-group center model was perfected by an urban counselor serving multiple buildings. The family-assisted remote option was born from necessity during a crisis and became a permanent option because it worked so well.

WHAT YOU'VE GAINED:

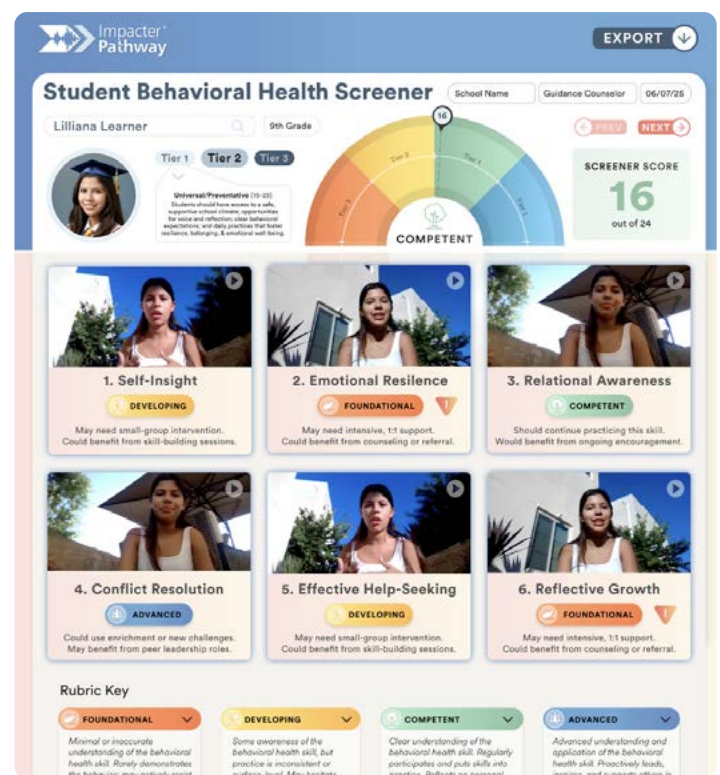
- Seven proven implementation models that work in diverse school environments
- Strategic decision-making frameworks that match solutions to your specific constraints
- Practical tips that prevent common pitfalls and build on real successes
- Student framing language that creates psychological safety for authentic sharing

WHAT HAPPENS NEXT:

Choose your approach based on your biggest constraint, not your ideal scenario. Start with what's sustainable in your environment. Perfect implementation is less important than consistent implementation.

THE BIGGER PICTURE:

You're not just gathering data—you're creating a system where every student knows their voice matters, their experiences are valued, and their perspectives drive better support. The technical aspects matter, but the human connection matters more.



Every implementation choice you make sends a message to students about how much you value their authentic voice. Choose approaches that honor their experiences, respect their comfort levels, and create genuine opportunities for them to be heard.

This playbook gives you the tools. Your care for students brings those tools to life.

Ready to begin? Pick your implementation model, gather your materials, and start listening. Your students have been waiting to be heard.